

DAMMON
ENGINEERING, INC.

CHIEF ENGINEER
EMMETT
DAMMON, P.E.

CHIEF ARCHITECT
ROBERT
WILTSE

554 OLD SPANISH TRAIL
SLIDELL, LA. 70458
OFFICE: 985-649-5832
FAX: 985-641-5950

WEBSITE:
WWW.DAMMONENGINEERING.COM
EMAIL:
DAMMONENG@BELLCSOUTH.NET

ARCHITECTURE
ENGINEERING
STUDIES
PLANNING
INVESTIGATION
EXPERT WITNESS

REROOFING OF
ABNEY ELEM.
SCHOOL

BLDG. B (#1978)
825 KOSTMAYER AVE.
SLIDELL, LA
70458

ROOF
PLAN

REV:

SCALE: AS NOTED

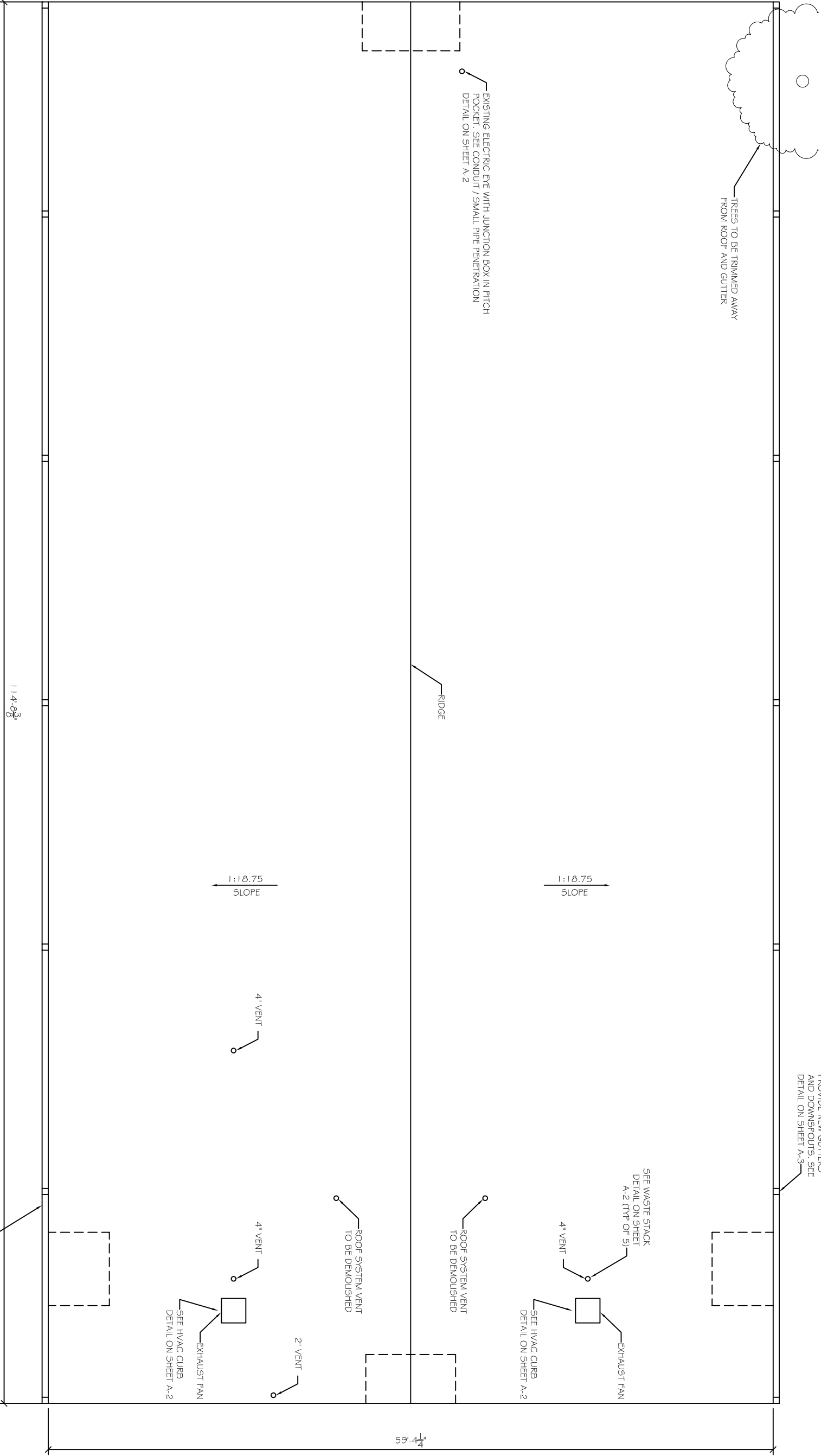
JOB#: 2145

DATE: 6-28-12

SHEET 3

A-1

OF 5



SCOPE OF WORK:

1. DISCONNECT AND REMOVE EXISTING MECHANICAL EQUIPMENT.
2. REMOVE AND DISPOSE OF EXISTING ROOF SYSTEM DOWN TO EXISTING LIGHT WEIGHT CONCRETE DECK. REMOVE AND DISPOSE OF EXISTING GUTTER AND DOWNSPOUT SYSTEM.
3. EXAMINE EXPOSED EXISTING LIGHT WEIGHT CONCRETE DECK. ADVISE ARCHITECT OF ANY CONDITION NOT SUITABLE FOR INSTALLATION OF NEW ROOF SYSTEM. PROVIDE ALLOWANCE FOR REMOVAL AND REPLACEMENT FOR UP TO 10 % OF LIGHTWEIGHT CONCRETE. SEE APPROPRIATE SPECIFICATION SECTIONS.
4. INSTALL NEW SIPPLAST MODIFIED BITUMEN ROOF SYSTEM WITH ALL ACCESSORIES, FLASHINGS, INSULATION, ETC. AS REQUIRED FOR A COMPLETE OPERATING SYSTEM IN ACCORDANCE WITH MANUFACTURER'S RECOMMENDATIONS AND TO PROVIDE A 20 YEAR N.O.L. WARRANTY. MANUFACTURERS OF EQUAL MODIFIED BITUMEN ROOF SYSTEMS ARE ACCEPTABLE IN ACCORDANCE WITH PROJECT SPECIFICATIONS.
5. NEW ROOF SYSTEM TO CONSIST OF:
 - PARABASE FS, MECHANICALLY FASTENED TO EXISTING LIGHTWEIGHT CONCRETE DECK
 - DENS DECK PRIME HAVING A THICKNESS OF 1/2", ADHERED IN OYBOND ADHESIVE
 - PARADIENE 20 TG BASE PLY. TORCH APPLIED
 - PARADIENE 30 FR CAP SHEET. TORCH APPLIED
 - PARADIENE 20 5A BASE FLASHING PLY. SELF-ADHERED
 - VEAL ALUMINUM FLASHING. TORCH APPLIED
 - PRE-FABRICATED PARAGUARD GRAVEL STOP PROFORM STAINLESS STEEL, ____ GAUGE
 - SIPPLAST 20 YEAR MEMBRANE / SYSTEMS GUARANTEE WITH PARAGUARD PERIMETER EDGE INCLUSION APPENDUM
6. RE-INSTALL AND RE-CONNECT EXISTING MECHANICAL EQUIPMENT.
7. CLEAN UP SITE AND REPAIR ANY AREAS DAMAGED BY THE CONTRACTOR INCLUDING RE-SODDING ANY GRASS AREAS DAMAGED.